

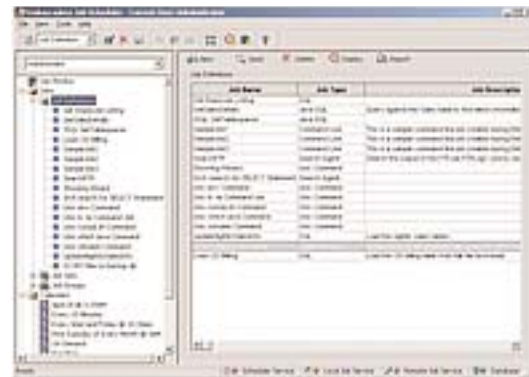
# Embarcadero® Job Scheduler Product Overview

## Powerful Job Management

Automate database maintenance and other routine tasks to improve application availability and lower operating costs. Database administrators must perform routine maintenance on production databases in order to ensure the up-time and performance of critical applications. These jobs, which include backups and checking the integrity of database structures, usually occur during off-peak hours when they will have minimal impact on business operations.

### Embarcadero Job Scheduler Key Benefits

- Facilitate “lights out” operations
- Achieve lower operating costs by eliminating manual labor
- Implement more reliable and systematic database maintenance routines to promote availability and performance
- Centralize management of all scheduled tasks throughout the enterprise Time zone management across the nation and the globe

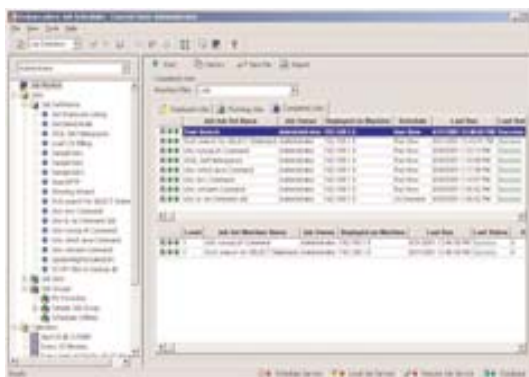


Embarcadero Job Scheduler is designed to help customers automate database maintenance and other routine tasks, such as nightly data loads or application batch processing, so that they can occur without manual intervention. It is a highly usable and reliable scheduling solution that helps customers boost productivity, lower operating costs, and implement best practices.

Because it is designed for the distributed systems database environment, Embarcadero Job Scheduler scales to as many machines as you need - across Oracle(r), Microsoft(r) SQL Server, Sybase(r) and IBM(r) DB2(r)/UDB databases running on Unix(r) or Windows NT. Its client/server/agent architecture allows you to add additional machines to your enterprise while easily managing them from one central console.

With Embarcadero Job Scheduler, you can:

- Facilitate “lights out” operations
- Achieve lower operating costs by eliminating manual labor
- Implement more reliable and systematic data-



base maintenance routines to promote availability and performance

- Centralize management of all scheduled tasks throughout the enterprise Time zone management across the nation and the globe

### Embarcadero Job Scheduler Product Features

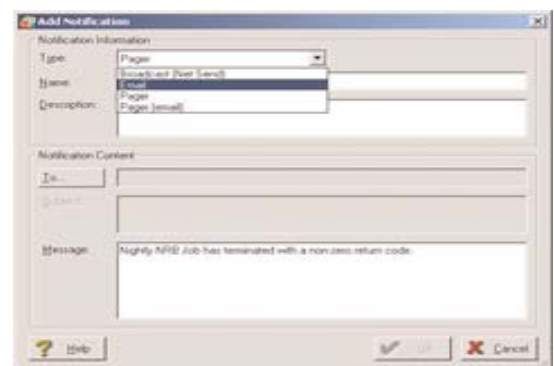
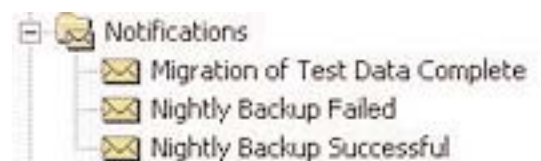
#### Job Scheduling Monitor

Embarcadero Job Scheduler includes an easy-to-read, centralized job monitor that enables you to stay current on all of your scheduling activities, including where jobs are deployed, when they ran last, and when they run next. Intuitive tabs allow easy switching between deployed, actively running, and completed jobs.

#### Robust Notifications

You can receive automatic notification of job completion or abnormal termination by email and can attach output logs to email notifications to facilitate faster problem determination.

Comprehensive address management allows for maximum flexibility when assigning notifications to jobs.



### Related Products

Embarcadero Job Scheduler seamlessly integrates with DBArtisan, Rapid SQL and Embarcadero Change Manager-so you can leverage the scheduler's distributed environment from your favorite desktop applications.

#### DBArtisan

Manage all the major databases from a single graphical console.

#### Rapid SQL

Create, version and deploy server-side objects across your enterprise.

#### Embarcadero Change Manager

Compare, capture and archive changes in your databases.

### Advanced Calendaring

Multiple calendar types provide you with everything you need for custom scheduling of your batch jobs. When you schedule database maintenance and other routine tasks, all calendars are created and saved as individual objects, paving the way for reuse among all scheduled jobs. This object approach means that when a calendar is saved in one place, all deployed jobs using that calendar automatically reflect the change.



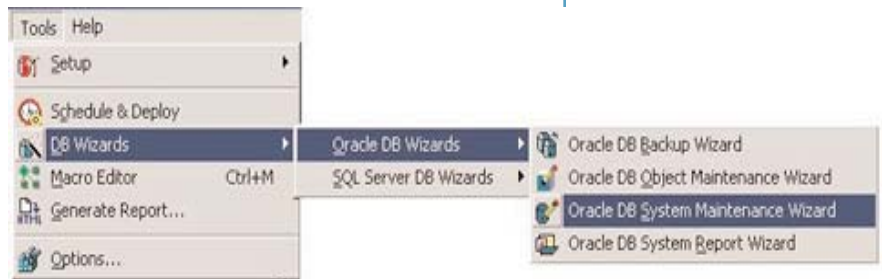
### Job Chaining

Embarcadero Job Scheduler enables you to easily schedule and deploy dependency driven batch jobs. You can view graphical representations of complex job environments with intuitive diagrams that make following complex job chains easy. Dependency chains can be constructed on the same machine, or across multiple machines.



### Maintenance Wizards

Embarcadero wizards eliminate time consuming and tedious creation of backup, maintenance and database documentation jobs for your Oracle and Microsoft SQL Server databases.



The Embarcadero Job Scheduler is designed to help customers automate database maintenance and other routine tasks so that they can occur without manual intervention.

### System Reliability

Embarcadero Job Scheduler is equipped with a robust fail-over architecture designed to handle the total loss of the primary scheduler server without a disruption of service. By designating a machine as a backup scheduler server, you can ensure that critical jobs always get executed.

### Detailed Reporting

Effortlessly create HTML reports on job configuration, deployments and outcomes. Using a wizard, you can create a report builder job, and schedule it with your desired frequency to create a Web site that always has up-to-date information.



### DBMS Support

- Oracle(r) 7.3.4 - 9i
- Microsoft(r) SQL Server 7.0 and 2000
- Sybase(r) 11.x and 12
- IBM(r) DB2(r) UDB 5.x, 6.x and 7.x

### Client Operating System Support

- Windows NT, Windows 2000, Windows XP, Windows 2003 Server

### Server Operating System Support

- Windows NT, Windows 2000, and Windows XP
- Solaris 2.7 or later
- Linux (Redhat 7.1) or later
- AIX 5.1 or greater
- HPUX 11 or greater

### Managed Machines (Agents) Operating System Support

- IBM AIX(r), HP-UX(tm), Sun Solaris(r), Linux, Windows NT, Windows 2000 and Windows XP

### System Requirements

- 50 MB disk space for job server component
- 30 MB disk space for job client component
- 800 × 600 monitor resolution for client (recommended)



425 Market Street  
San Francisco, CA 94105  
Phone 415-834-3131  
Fax 415-434-1721  
[sales@embarcadero.com](mailto:sales@embarcadero.com)  
[www.embarcadero.com](http://www.embarcadero.com)

© 1994–2003 Embarcadero, the Embarcadero Technologies logos and all other Embarcadero Technologies product or service names are trademarks of Embarcadero Technologies, Inc. All other trademarks are property of their respective owners.

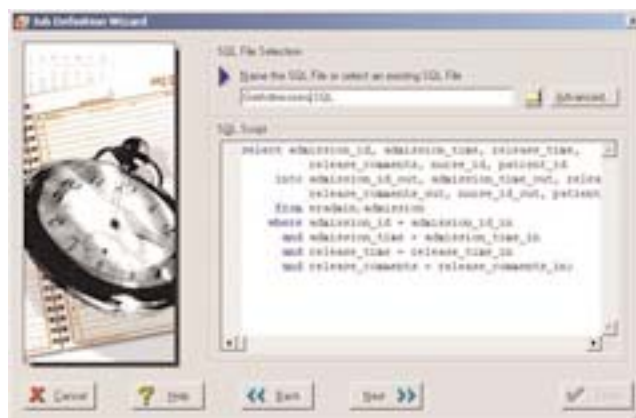
### File Dependencies

Use file dependencies to launch jobs based on the existence and attributes of a flat file. More than just creating the dependency, you can also perform the common file maintenance tasks that occur after the job completes.



### Native DBMS Interface

Embarcadero Job Scheduler eliminates the time-consuming task of wrapping SQL jobs in batch files or shell scripts for scheduling. You can directly code your SQL into the job, or import it from an existing text file - native connectivity eliminates the need for an ODBC connection from the managed machine to the target database.



### Product Integration

With the click of a button, you can seamlessly manage jobs and schedule scripts that were generated using other Embarcadero products, including DBArtisan, Rapid SQL and Embarcadero Change Manager.

