

Embarcadero Extreme Test

Bringing Agility and Reliability to Performance Testing

Key Benefits

- **Simplicity**
Yields the shortest time to benefit
- **Productivity**
Streamlines the time and expense of authoring and maintaining tests
- **Versatility**
Accommodates a wide variety of testing scenarios
- **Capability**
Offers broad coverage of today's application infrastructure
- **Reliability**
Delivers a reliable day-to-day testing platform
- **Scalability**
Generates large amounts of load cost effectively
- **Compatibility**
Exploits existing investments in IT infrastructure
- **Affordability**
Furnishes the lowest total cost of ownership
- **Results**
Enables delivery of meaningful test results

Today's fast paced business environment requires enterprise applications that can accommodate rapid expansion. To meet these requirements, enterprise applications must remain at peak performance levels. Yet, many performance problems are undiscovered or unaddressed, leading to costly downtime, poor customer experience, and inefficient use of resources. To preempt performance problems and to achieve service-level goals, more IT organizations are adopting performance testing as a core discipline. Embarcadero® Extreme Test™ offers an integrated environment that facilitates an end-to-end performance testing solution.

Embarcadero Extreme Test is a next-generation performance testing solution for measuring and analyzing the performance of enterprise applications. With Extreme Test, you can quickly and accurately isolate system bottlenecks, and then make intelligent decisions concerning resource allocation, production readiness, and performance contingency planning.

Extreme Test is the perfect tool for IT professionals who are responsible for:

- Performance of Web-based enterprise applications
- Scalability and performance of database servers on a variety of platforms
- Migration of critical application infrastructure to run on Linux

Extreme Test Features

Goals-Based Testing

Embarcadero Extreme Test uses a goals-based approach to performance testing, allowing performance managers and quality assurance (QA) professionals to not only test the load on a given application, but also to set thresholds and parameters on the test to ensure that the outcome meets all defined requirements. This ability dramatically accelerates the testing process as tests are aborted once thresholds are exceeded. In addition, Extreme Test's User Model Editor helps to automatically create more realistic user scenarios, which in turn, help to generate more accurate and meaningful test results.

With Extreme Test, users can control key variables, such as:

- Number of test phases
- User ramp rates
- User think time
- Bandwidth
- Accurate browser simulation
- Assignment and interleaving of user scenarios

Integrated Relational Repository

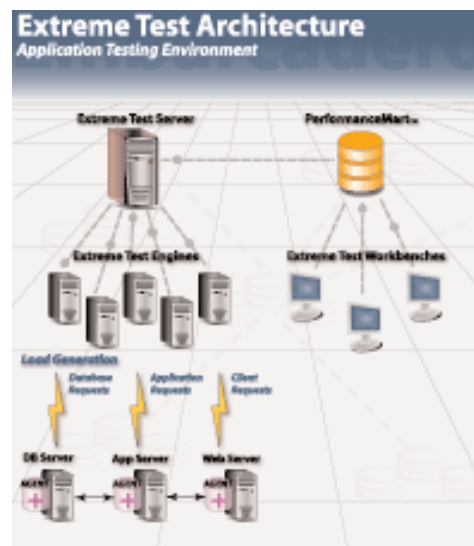
Embarcadero Extreme Test includes a relational repository that stores comprehensive information for all aspects of the test – definition, configuration, and execution.

Leveraging the Extreme Test repository, performance managers and QA professionals can identify performance problems and optimize components, perform detailed historical analysis of test procedures and results, as well as

improve processes, and make better scenario-based predictions of system performance.

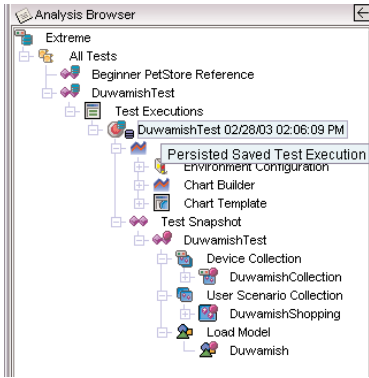
Advantages offered by an integrated repository include:

- Open access to performance metadata and test results
- Higher developer productivity through the reuse of test scripts and scenarios
- Support for team-based testing
- Automatic capture of versions and histories
- Comparison of test executions against baselines



Universal Workbench

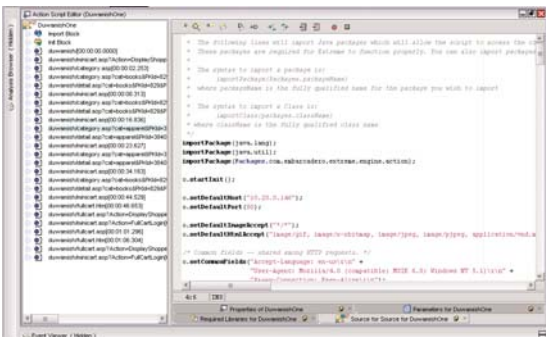
Instead of requiring multiple tools, Embarcadero Extreme Test provides the Universal Workbench – a single interface for managing every aspect of the testing cycle including environment setup, test creation, test



execution, and test analysis. The Universal workbench increases staff productivity by offering a single console to complete a test from start to finish. It also enhances developer efficiency by incorporating advanced features such as a code sense editor and a debugger that enhance developer productivity.

Simple Scripting Environment

Extreme Test helps users save time and ensure accuracy by providing a standard scripting language. Users can take advantage of code sense, fast navigation, debugging, and built-in documentation in the form of JavaDoc. Extreme Test also allows users to identify precise testing points and raise productivity by walking through any scenario and letting the tool record actions and generate related test scripts.



Extreme Test's integrated scripting environment allows users to:

- Automate script creation
- Debug and compile scripts
- Edit and manipulate scripts
- Call existing test scripts

Open, Standards-based Architecture

Extreme Test is built on an open, standards-based architecture. The result is an integrated, highly scalable infrastructure that delivers great value and flexibility while avoiding technology lock-in. Extreme Test's unprecedented scalability extends to multiple platforms – users can be assured that tests created for a single platform will run seamlessly on multiple platforms.

Database Performance Testing

Embarcadero Technologies leverages its extensive experience and expertise in database management by incorporating rich database load-generation features into Extreme Test. With Extreme Test, users can automate database load generation as well as simulate reads and writes and user connections to virtually any datasource through JDBC. Users can also stress test application servers and Web servers, as well as apply database-specific load to database servers.

Extreme Workbench provides all the tools necessary to generate stress tests from end-to-end:

Script Workspace

Offers JavaScript with built-in debugging and compiling

Device Workspace

Configures all the devices targeted to participate in the test

Test Workspace

Brings together test artifacts with a simple drag-and-drop

Analysis Workspace

Displays charts and statistics about the test as it runs

System Requirements

Extreme Test Server

- Windows NT 4 (SP4+)
- Windows XP Pro
- Windows 2000 Pro
- Windows 2000 Server
- Linux kernel 6.2 or later
- 150 MB HD space
- 256 MB of RAM minimum (512 MB recommended)

Extreme Test Engine

- Windows NT 4 (SP4+)
- Windows XP Pro
- Windows 2000 Pro
- Windows 2000 Server
- Linux kernel 6.2 or later
- 60 MB HD space
- 128 MB RAM min (256 MB recommended)

Extreme Test Workbench

- Windows NT 4 (SP4+)
- Windows XP Pro
- Windows 2000 Pro
- Windows 2000 Server
- Linux kernel 6.2 or later
- 40 MB HD space
- 256 MB of RAM minimum (512 MB recommended)

Extreme Test Repository

- Microsoft SQL Server 2000 (SP3 recommended)
- Sybase ASE 12.5
- Oracle 8i, 9i



425 Market Street, Suite 425
San Francisco, CA 94105
Phone 415-834-3131
Fax 415-434-1721
sales@embarcadero.com
www.embarcadero.com

© 2003 Embarcadero Technologies, Inc. Embarcadero, the Embarcadero Technologies logos and all other Embarcadero Technologies product or service names are registered trademarks or trademarks of Embarcadero Technologies, Inc. All other trademarks are property of their respective owners.